



# Chicago Foundation for Education

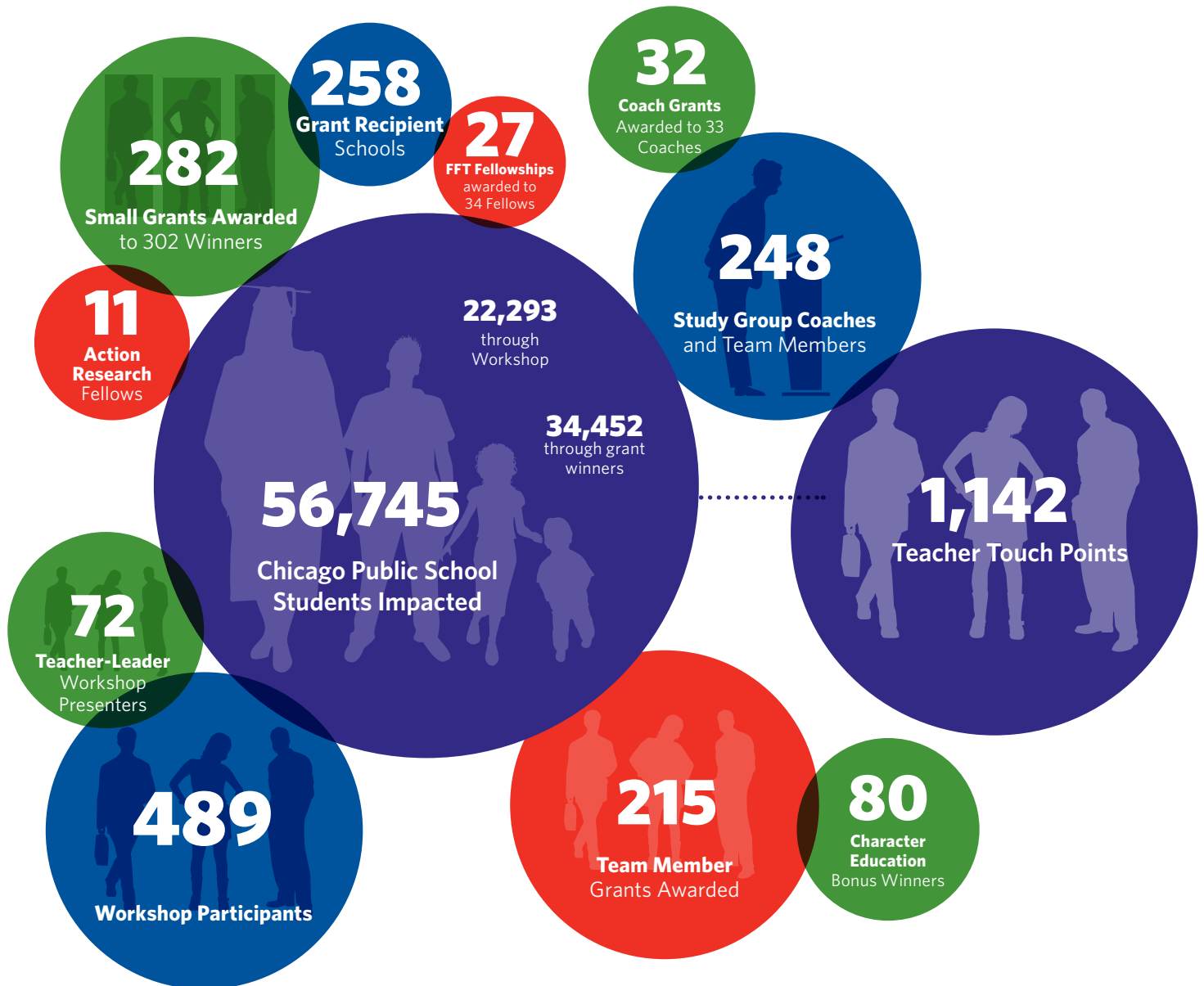
2011-2012 ANNUAL REPORT



# CHICAGO FOUNDATION FOR EDUCATION *Mission*

Chicago Foundation for Education supports Chicago Public School teachers with leadership, learning, and grant opportunities that translate into enhanced classroom experiences.

## FY2012 AT-A-GLANCE



### TABLE OF CONTENTS

SMALL GRANTS PROGRAM [PAGE 4](#)  
STUDY GROUP PROGRAM [PAGE 6](#)  
ACTION RESEARCH PROGRAM [PAGE 8](#)  
FUND FOR TEACHERS PROGRAM [PAGE 10](#)  
ADDITIONAL CFE INITIATIVES [PAGE 12](#)  
PARTICIPATING CHICAGO PUBLIC SCHOOLS [PAGE 13](#)

STAFF & VOLUNTEER LEADERS [PAGE 15](#)  
VOLUNTEER CORPS [PAGE 16](#)  
CORPORATE & FOUNDATION CONTRIBUTORS [PAGE 17](#)  
INDIVIDUAL & FAMILY FOUNDATION CONTRIBUTORS [PAGE 17](#)  
FINANCIAL HIGHLIGHTS & IN-KIND CONTRIBUTORS [PAGE 18](#)



## DEAR FRIENDS,

CFE's grants, fellowships, and leadership opportunities support high quality CPS teachers and keep them engaged in the classroom. Our award winners appreciate the enduring resources that validate their work as professionals and help them model a love of learning in their classrooms.

The CFE Study Group Program is a great example of this. Teacher-leaders are identified to share successfully-implemented teaching methodologies with their peers. They facilitate reflection, collaboration, and problem solving across grade levels and school environments. The teachers buzz with ideas and stories of success, with a truly palpable energy.

As a volunteer Study Group Liaison, I have had the opportunity to observe many CFE teachers in action, and witness firsthand the power of the program. The stories of Schewedia Brassell (Coach) and Karen Burrage-Poindexter (Team Member) on page 6 are only a small sample of the impact we are having in the classroom.

The amazing group of committed volunteers is what got me started with CFE, 15 years ago. Volunteers help us evaluate grant applications, visit teachers, and organize events for us. They come in and out of the office, bringing new ideas and offering their support.

It is their commitment, as well as the contributions of our many individual, corporate, and foundation donors, that power CFE's reach into Chicago Public Schools. It is an honor to work with this group of people who care so much about education in our community, and to work alongside the devoted CFE staff.

I am proud to serve on CFE's Board of Directors. Alex Washington, my Vice-Chair, and I feel a tremendous responsibility to build upon the quality work that the Chicago Foundation for Education has been doing for the past 26 years.

Sincerely,

Mary Beth Canfield  
Board Chairperson



## DEAR FRIENDS,

Twenty years ago, when I first began teaching in the Chicago Public Schools, I developed a wish list of materials I needed for my classroom that the district could not provide. A grant from the Chicago Foundation for Education was the first outside assistance I received; a CFE Small Grant funded books to supplement my math curriculum. CFE provided resources, I used those resources to facilitate academic achievement, and my confidence grew.

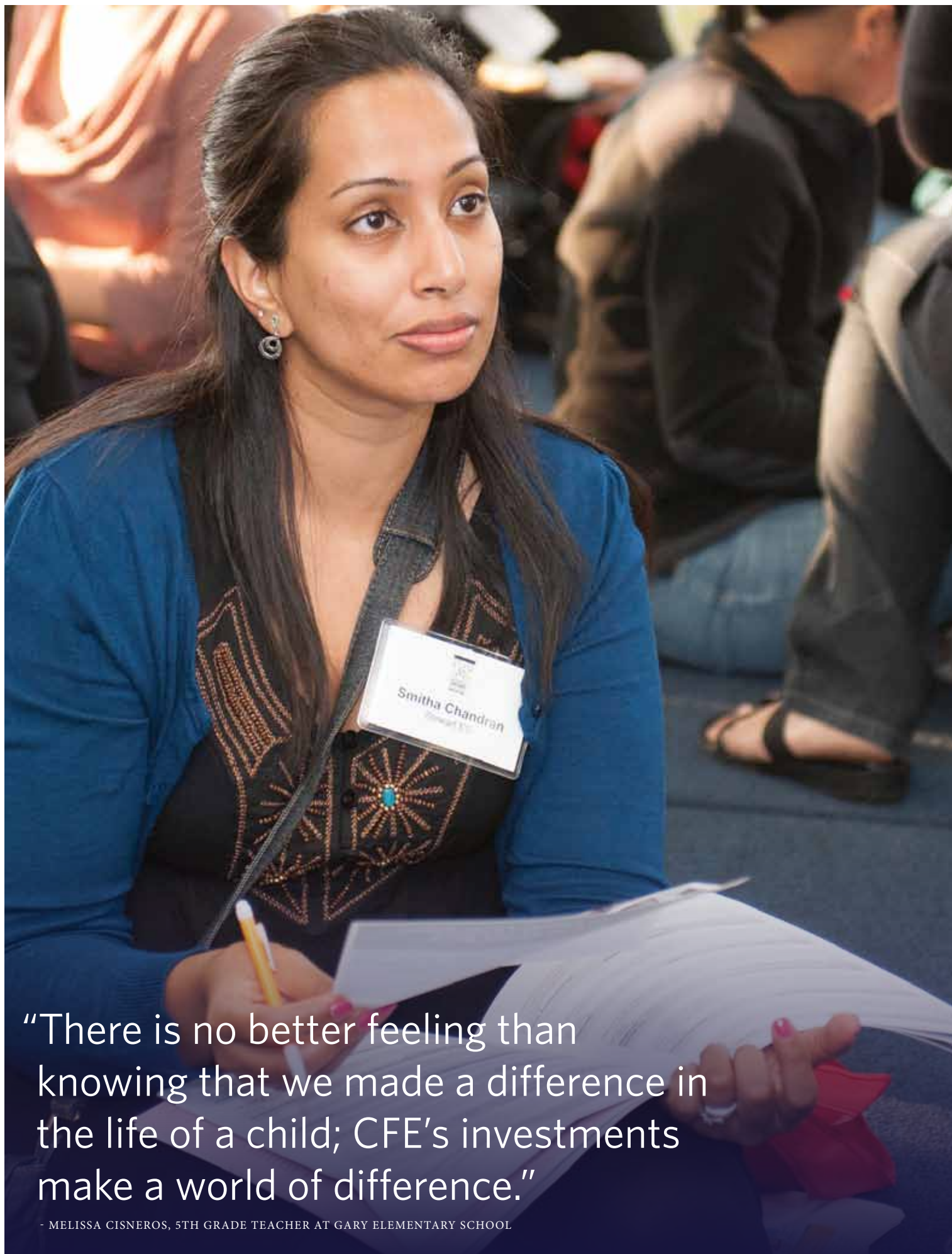
After earning a few more Small Grants, I recognized that I could make an even greater difference if I shared my successes with other teachers. My first teacher-leadership position was as a CFE Study Group Coach, a collaborative learning opportunity that expanded my network of professional colleagues, many of whom I still connect with long after the program concluded. My culminating experience was my CFE Action Research Fellowship, which provided an outlet for me to critically examine my teaching practice and identify how I was most effective.

I'm proud of my professional achievements. I have been awarded a total of ten CFE grants, was twice the Chair of the Workshop Committee, and led numerous CFE grant-writing sessions. In addition to serving on CFE's Board of Directors, I am on the governing board of the leading statewide technology organization and I was recently named one of Chicago Public Schools' "Ones to Watch".

The seeds for my success were sowed with the very first small grant I received from the Chicago Foundation for Education. Thank you for supporting me throughout my CPS career and recognizing me as the Debby Jannotta and Shirley Jaffee Teacher of the Year. I am eternally grateful to CFE.

Sincerely,

Nicole M. Zumpano, NBCT  
May Community Academy  
Board Member and  
2011 Debby Jannotta and Shirley Jaffee Teacher of the Year



“There is no better feeling than knowing that we made a difference in the life of a child; CFE’s investments make a world of difference.”

- MELISSA CISNEROS, 5TH GRADE TEACHER AT GARY ELEMENTARY SCHOOL

# SMALL GRANTS *Program*

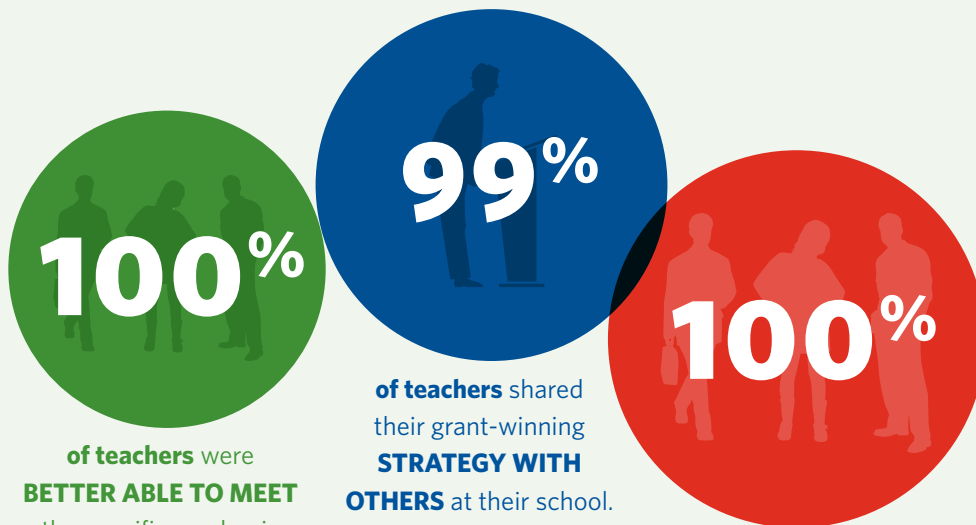
Chicago Foundation for Education Small Grants fund the implementation of classroom and school-wide curricular projects that respond to the specific academic, social, and emotional needs of a student population. Grants of up to \$600 are awarded to fund books, supplies, materials, field trips, or other items that will deepen student engagement and promote active learning. Each application is evaluated by a minimum of three CFE volunteers who use a standard rubric.

Last fall, CFE made 281 awards to 318 Pre-K through 8th Grade CPS teachers. These Small Grant recipients utilized their awards to reach 22,036 students with projects such as *Hands-On Math Fun for Everyone*, *History Detectives: Putting Together Clues from the Past*, and *When Parents Participate, Students Succeed*. After implementing their projects, teachers had the opportunity to disseminate their ideas by presenting at CFE's annual Workshop and participating in CFE's Study Group Coach Program.



## Small Grant **TEACHER SPOTLIGHT**

Melissa Cisneros, a 5th grade teacher at Gary Elementary School, earned a Small Grant to fund high-interest reading materials to stimulate her ELL students' learning. Melissa engaged her students by reading Percy Jackson novels in conjunction with exploring the central themes of Greek mythology. As a result of this effort, Melissa's students increased their overall reading comprehension, and ultimately increased their performance on their end-of-the-year assessment.



**100%** of teachers were **BETTER ABLE TO MEET** the specific academic needs of their students with their CFE Small Grant.

**99%** of teachers shared their grant-winning **STRATEGY WITH OTHERS** at their school.

**100%** of teachers attributed an increased or **RENEWED COMMITMENT** to teaching in Chicago Public Schools as a result of CFE's support.



“Each time you fund a grant,  
you encourage a teacher.”

- SCHEWEDIA BRASSELL, SCIENCE TEACHER AND LIBRARIAN  
AT SCOTT JOPLIN ELEMENTARY SCHOOL

## STUDY GROUP Program

CFE Study Groups bring together PreK-8th grade CPS educators (Team Members) to learn effective teaching methods from their peers (Coaches). Coaches are identified each spring, and then a catalog of Study Group offerings are shared with teachers across the district. Potential Team Members review the catalog and rank their top three choices.

Once Team Members have been selected, their Coaches facilitate a minimum of twelve hours of cooperative learning. During meetings, Team Members share strategies, support each other through implementation, and adapt teaching methods for optimal efficacy across classrooms. Peer feedback and reflection on progress are hallmarks of the Study Group process. Collaboration becomes essential, allowing teachers to share suggestions and form a network of fellow professionals working toward similar goals.

This year, CFE awarded 200 teachers the opportunity to participate in 32 Study Groups. Strategies implemented by Study Groups included: *Guided Reading: Strategies that Work*; *Inspiring Inquiry through Science*; and *Spark Motivation with Student-Centered Projects*.



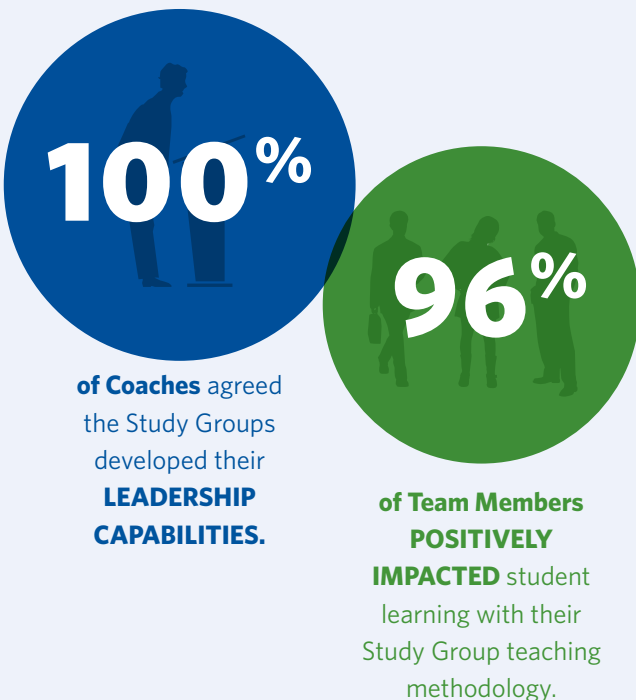
### STUDY GROUP COACH SPOTLIGHT

Schewedia Brassell is a science teacher and librarian at Scott Joplin Elementary School. She has had success with a particular teaching method - using journals to reflect on science inquiry and discovery. As a CFE Study Group Coach, Schewedia shares her instructional strategy with other educators and supports their implementation in their own classes. She encourages her teachers to reflect as well, and stresses the importance of lifelong learning as a way to take students to the next level of excellence.



### STUDY GROUP TEAM MEMBER SPOTLIGHT

Karen Burrage-Poindexter, a 3rd grade teacher at Bennett-Shedd Elementary School, earned her sixteenth CFE grant to participate in Schewedia's Study Group. The grant provided her the opportunity to collaborate with teachers from across the district and funded hands-on science labs and experiments. With her Group's support, she adapted the Study Group curriculum to meet the specific aptitudes and interests of her students. Karen reported that her students not only became more confident using technology, researching, and presenting, but they also demonstrated increased achievement in reading, science, and math.





“The ARLI cohort of professionals challenges us in our research and leads to a huge benefit for both our students and ourselves.”

- SONIA WANG, 8TH GRADE ENGLISH TEACHER AT THE UNIVERSITY OF CHICAGO CHARTER SCHOOL (WOODLAWN CAMPUS)

# ACTION RESEARCH LEADERSHIP INSTITUTE *Program*

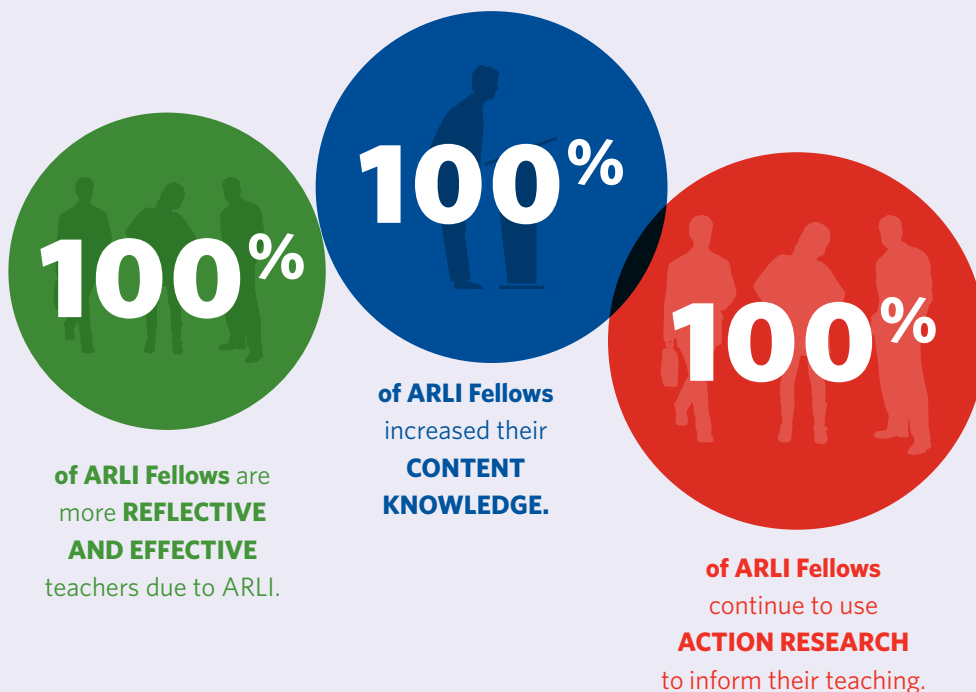
Action Research is a systematic process that teachers can use on an on-going basis to analyze the effectiveness of their instruction through data collection, evaluation, and reflection. Chicago Foundation for Education offers an Action Research Leadership Institute (ARLI, formerly known as TNLI) that has been hailed by grant winners as “the best professional development” they have ever had.

Over the course of a school year, ARLI Fellows collect data in their classrooms, analyze the efficacy of specific instructional strategies, document student achievement, and reflect upon their practice. The program includes more than 45 hours of collaborative learning facilitated by a university advisor and supported by a CFE staff member. The research findings and resulting policy recommendations of a teacher’s inquiry have the potential to impact a classroom, school, or an entire district.



## ACTION RESEARCH FELLOW SPOTLIGHT

Sonia Wang was awarded the ARLI fellowship as an 8th grade English teacher at the University of Chicago Charter School (Woodlawn Campus). She describes her ARLI experience as “a parallel journey to my students – we all discovered how to use our voice in a way that is meaningful and empowering”. Sonia utilized both standardized tests, such as the ISAT, and evaluation of student research papers to measure academic development.





"Through CFE, I set an example for my students. I am a lifelong learner."

- XINJIE DING, TEACHER AT PRUSSING ELEMENTARY SCHOOL

# FUND FOR TEACHERS Program

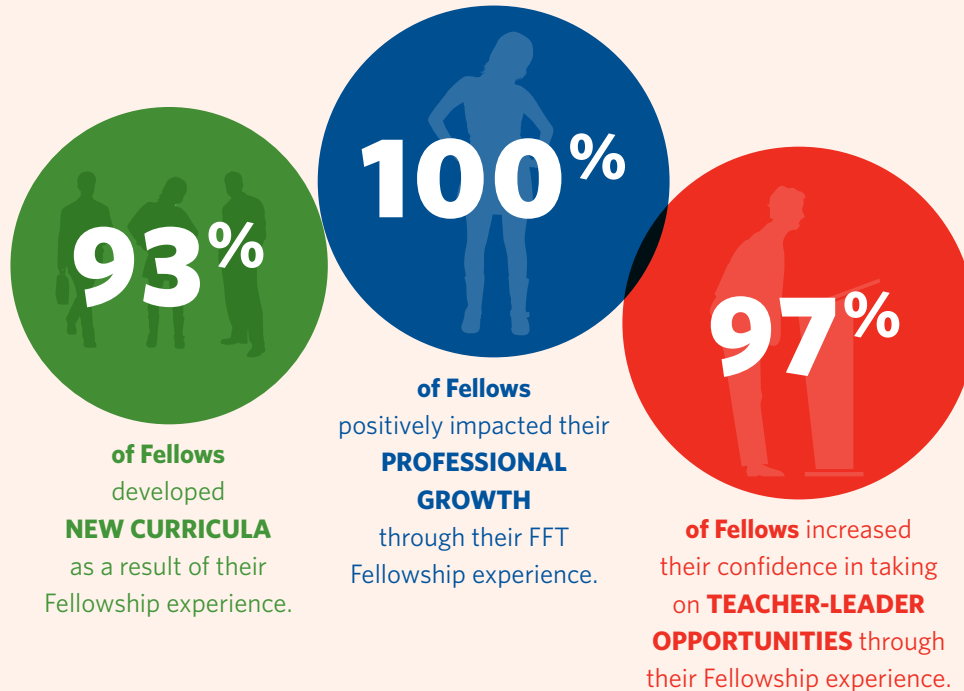
CFE Fund for Teachers Fellowships honor Chicago's most talented teachers by providing them with powerful opportunities for professional renewal and growth, while simultaneously allowing them the chance to work towards increasing academic achievement, global awareness, and cultural sensitivity in students. At the beginning of 2012, CFE awarded 29 Fund for Teacher Fellowships to 45 Chicago Public School teachers, in partnership with the national Fund for Teachers organization.

Teachers with three or more years of classroom experience submitted proposals detailing how an FFT Fellowship would improve their instruction, as well as how the skills garnered during this experience would ultimately benefit their students, curricula, and school community. 2012 Fellowships varied from retracing the conquests of Ghengis Kahn and enhancing a unit on the feudal nature of ancient Mongolian and Chinese civilizations to attending the Hands-On Middle School Science Summer Institute at San Francisco's Exploratorium Museum.



## FUND FOR TEACHERS FELLOW SPOTLIGHT

Xinjie Ding, a teacher at Prussing Elementary School in Chicago's Jefferson Park neighborhood, earned a FFT Fellowship to trace the footsteps of Marco Polo and explore how ancient trade routes brought lifelines to the deserts. He then encouraged his students to develop critical thinking skills while piecing together the primary resources collected during his travels. Xinjie ultimately migrated his data to the school's website and made it available to the entire CPS community, including teachers in Chinese language programs across the city.





“CFE’s Workshop provides me with the opportunity to learn from and collaborate with teachers from all over the city.”

- KATE RYAN, 3RD GRADE TEACHER AT GALAPAGOS CHARTER ELEMENTARY SCHOOL

## Additional **CFE INITIATIVES**

### WORKSHOP

CFE hosted its *23rd Annual Teachers as Leaders and Learners Workshop* on October 1, 2011. The conference featured more than 60 CFE teacher-presenters, all of whom showcased their grant-winning curricular projects, instructional strategies, and action research findings. Nearly 500 teachers participated in this Saturday morning event and were greeted by an engaging Keynote address from Esmé Raji Codell, a best-selling author and CPS educator. CFE's Workshop also offered a Resource Fair, grant-writing assistance, and a "Meet and Greet" networking session at the end of the day.

### CHARACTER EDUCATION/SEL

Chicago Foundation for Education has always recognized the importance of social and emotional learning (SEL) as an integral part of a student's education. CFE encourages teachers who cultivate students' intrinsic motivation to:

- Develop critical thinking and decision-making skills;
- Strengthen self-esteem and increase their respect for others;
- Understand the consequences of their decisions and actions; and,
- Develop into productive, responsible members of their classrooms, schools, and communities.

CFE awards \$100 and \$200 Character Education Bonuses to more than 25% of our Small Grant, Study Group Coach Grant, and Action Research Fellowship applicants. Bonus grant-winners use the additional funds to support the integration of CE/SEL values into their award-winning projects.



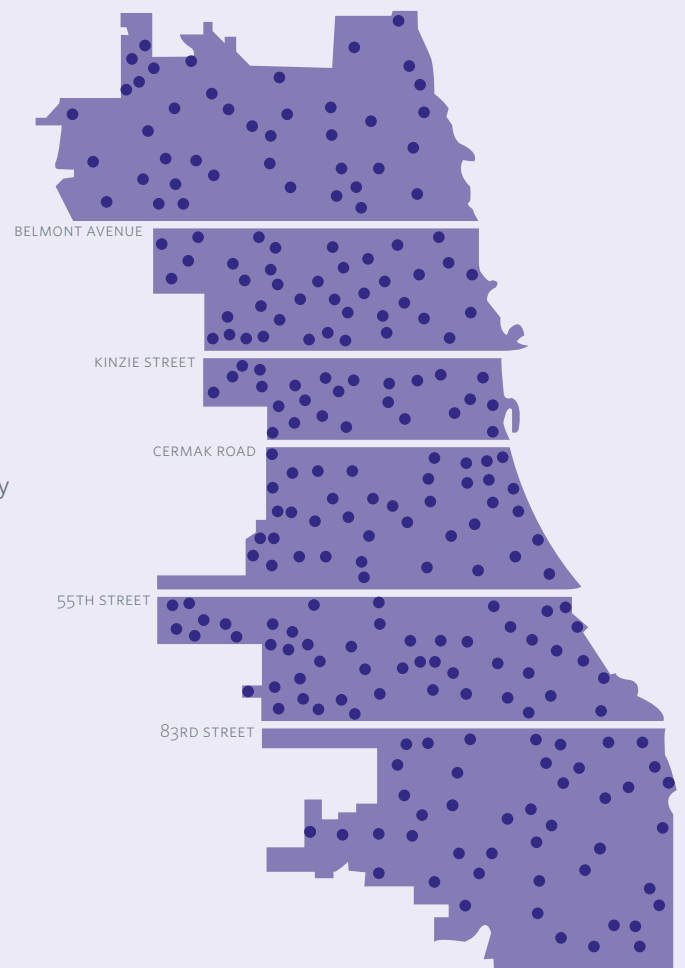
## Participating **CHICAGO PUBLIC SCHOOLS**

Albany Park Multicultural Academy  
Alcott Elementary  
Aldridge Elementary  
Altgeld Elementary  
Armour Elementary  
Armstrong, G. Elementary  
Ashburn Elementary  
AUSL - Bethune Elementary  
AUSL - Bradwell Elementary  
AUSL - Chicago Academy  
Elementary  
AUSL - Curtis Elementary  
AUSL - Deneen Elementary  
AUSL - Dulles Elementary  
AUSL - Howe Elementary  
AUSL - Johnson Elementary  
AUSL - Morton Elementary  
AUSL - National Teachers Elementary  
AUSL - Sherman Elementary  
AUSL - Tarkington Elementary  
Azuela Elementary  
Banneker Elementary  
Barnard Elementary  
Barton Elementary  
Bateman Elementary  
Beard Elementary  
Beasley Math & Science Gifted  
Magnet  
Beaubien Elementary  
Beethoven Elementary  
Belding Elementary  
Bennett Elementary  
Black Math & Science Magnet  
Blaine Arts Elementary  
Bontemps Elementary  
Brennemann Arts Elementary  
Brentano Math & Science Elementary  
Bridge Elementary  
Brown, W. Elementary  
Brownell Elementary  
Burke Elementary  
Burley Elementary  
Burnside Magnet Elementary  
Byrne Elementary  
Calmecca Academy  
Cameron Elementary  
Camras Elementary  
Canter Language Middle School  
Canty Elementary  
Cardenas Elementary  
Carter Elementary  
Catalyst - Circle Rock Elementary  
Catalyst - Howland Elementary  
Chase Language Elementary  
Chavez Elementary  
Christopher Elementary  
CICS - Avalon Elementary  
CICS - Bucktown Elementary  
CICS - Irving Park Elementary  
CICS - Prairie Elementary  
CICS - Wrightwood Elementary  
Claremont Academy  
Clark, G. Arts Elementary  
Clay Elementary  
Clinton Elementary  
Colemon Elementary  
Columbia Explorers Academy  
Columbus Elementary  
Coonley Gifted Elementary  
Courtenay Elementary  
Crown Arts Elementary  
Cuffe Math, Science & Tech  
Academy  
Darwin Language Academy  
Davis, N. Elementary  
Dawes Math & Science Magnet  
Dever Elementary  
Disney Magnet Elementary  
Disney II Magnet Arts Elementary  
Dore Elementary  
Douglass HS  
Drake Elementary  
Drummond Magnet Elementary  
Dumas Tech Academy  
Earle Elementary  
Eberhart Elementary  
Edgebrook Elementary  
Edison Gifted Elementary  
Edison Park Elementary  
Edison Regional Gifted Center  
Emmet Language Elementary  
Everett Elementary  
Evers Arts Elementary  
Fairfield Elementary  
Faraday Elementary  
Farnsworth Elementary  
Fermi Elementary  
Fernwood Elementary  
Field Elementary  
Franklin Magnet Arts Elementary  
Fuentes Charter Elementary  
Funston Elementary  
Galapagos Charter Elementary  
Galileo Math & Science Magnet  
Gallistel Elementary  
Gary Elementary  
Gillespie Elementary  
Goldblatt Arts Elementary  
Goudy Elementary  
Green Elementary  
Gregory Elementary  
Gresham Elementary  
Guggenheim Elementary  
Haines Elementary  
Hale Elementary  
Hamilton Arts Elementary  
Hampton Arts Elementary  
Hanson Park Elementary  
Harte Elementary  
Haugan Pre-K  
Hay Elementary  
Hayt Elementary  
Healy Elementary  
Henry Elementary  
Herbert Elementary  
Hernandez Middle School  
Herzl Elementary  
Hibbard Elementary  
Hitch Elementary  
Hughes, L. Elementary  
Hurley Elementary  
Infinity Tech HS  
Inter-American Magnet Elementary  
Jackson, A. Language Magnet  
Elementary  
Jackson, M. Elementary  
Jamieson Elementary  
Jenner Arts Elementary  
Joplin Elementary  
Juarez HS  
Kanoon Elementary  
Kelly HS  
Key Elementary  
Kilmer Elementary  
Lane Tech HS  
Langford Community Academy  
Lara Elementary  
LaSalle II Language Academy  
Lawrence Elementary  
LEARN Charter - Excel  
Legacy Charter  
Libby Elementary  
Lincoln Elementary

Lindblom Math & Science HS (7-12)  
 Linne Elementary  
 Lloyd Elementary  
 Locke, A. Charter Elementary  
 Lorca Elementary  
 Lowell Elementary  
 Lyon Elementary  
 Madero MS  
 Mann Elementary  
 Marquette Elementary  
 Marsh Elementary  
 May Community Academy  
 Mayer Arts Elementary  
 Mayo Elementary  
 McAuliffe Elementary  
 McClellan Elementary  
 McDade Classical Elementary  
 McPherson Elementary  
 Metcalfe Math & Science Elementary  
 Mitchell Elementary  
 Monroe Language Elementary  
 Morrill Math & Science Elementary  
 Murray Language Academy  
 Neil Elementary  
 Nettelhorst Arts Elementary  
 New Field Elementary  
 Newberry Math & Science  
 Elementary  
 Nicholson Technology Academy  
 Nightingale Elementary  
 Nixon Elementary  
 Noble Street - Rowe-Clark HS  
 North River Elementary  
 Northwest Middle School  
 Nosh Elementary  
 Ogden Elementary  
 Oglesby Elementary  
 Ortiz de Dominguez Elementary  
 Otis Language Elementary  
 Owens Arts Elementary  
 Park Manor Elementary  
 Parkside Community Academy  
 Pasteur Elementary  
 Peirce Elementary  
 Pershing East Elementary  
 Pershing West Elementary  
 Perspectives IIT HS (6-12)  
 Peterson Elementary  
 Pickard Elementary  
 Pilsen Elementary  
 Pirie Arts Elementary

Polaris Charter Elementary  
 Pope Elementary  
 Portage Park Elementary  
 Prescott Elementary  
 Price Elementary  
 Prieto Elementary  
 Pritzker Gifted Arts Elementary  
 Prussing Elementary  
 Pulaski International Elementary  
 Ravenswood Arts Elementary  
 Ray Language Elementary  
 Reinberg Elementary  
 Revere Elementary  
 Robinson Elementary  
 Ruiz Arts Elementary  
 Ryder Elementary  
 Ryerson Elementary  
 Sabin Magnet Elementary  
 Salazar Elementary  
 Saucedo Math &  
 Science Elementary  
 Sauganash Elementary  
 Sawyer Elementary  
 Scammon Elementary  
 Schubert Elementary  
 Schurz HS  
 Seward Elementary  
 Sheridan Math &  
 Science Elementary  
 Shields Elementary  
 Shoop Elementary  
 Simeon HS  
 Skinner Classical Elementary  
 South Shore Fine  
 Arts Elementary  
 Stagg Elementary  
 STEM Magnet Academy  
 Stevenson Elementary  
 Stewart Elementary  
 Stock Elementary  
 Stockton Elementary  
 Stone Elementary  
 Sutherland Elementary  
 Swift Elementary  
 Talcott Fine Arts &  
 Museum Academy  
 Thorp, J. Elementary  
 Twain Elementary  
 University of Chicago -  
 Donoghue Charter Elementary  
 UNO - Casas Elementary

UNO - Gage Park  
 Urban Prep - Englewood HS  
 Volta Elementary  
 Wadsworth Elementary  
 Ward Elementary  
 Warren Elementary  
 Washington Elementary  
 Westcott Elementary  
 Whitney Elementary  
 Whittier Elementary  
 Yale Elementary  
 Yates Elementary  
 Zapata Elementary



# STAFF & VOLUNTEER *Leaders*

## STAFF

Amy Sheren, *Executive Director*  
Sarah Hoppe, *Program Director*  
Nedrahae Hunt, *Grants Coordinator*  
Andrea Schuster, *Program Coordinator*  
Robbie Klinger, *Development Coordinator*  
Sarah Rossi, *Action Research Program Consultant*  
Sue Hansen, *University Advisor*  
Katherine Gean, *Program Assistant*  
Jennifer Cofsky, Sheena Desai  
Ola Topczewska, Rachel White, *Interns*

## *Program* LEADERS

Phyllis Chambers, *Action Research Leadership Institute*  
Tricia Hagenah, *Small Grants*  
Angie Pilgrim, *Study Groups*  
Louanne Holland, *Character Education*  
Sue Laue, *Character Education*

## *Workshop* COMMITTEE

|                        |                |
|------------------------|----------------|
| Jeanne Andersen Bakula | Heather Moore  |
| Brandon Barr           | Marsha Nathan  |
| Tai Basurto            | Younghee Park  |
| Anne Boor              | Jessica Siegel |
| Tannaz Chapman         | Sara Simon     |
| Ron Hale               | Monica Sims    |
| Tanginia May           | Nicole Zumpano |

## *Small Grant* SUBJECT AREA COORDINATORS

|                 |                |
|-----------------|----------------|
| Tracie Clisby   | Dara Milner    |
| Kristen Evans   | Susan Nelson   |
| Louanne Holland | Angie Pilgrim  |
| Shirley Jaffee  | Susan Rohrman  |
| Rebekah Kane    | Nancy Saladino |
| Sue Laue        | Laura Watson   |
| Michal Miller   |                |

## *Small Grant* OBSERVATION COORDINATORS

|                 |                  |
|-----------------|------------------|
| Carolyn Arnolds | Eloise Neidhardt |
| Judy Harmon     | Margie Rogasner  |
| Louellen Murray | Nancy Saladino   |

## *Study Group* LIAISONS

|                   |                   |
|-------------------|-------------------|
| Hntsa Asgedom     | Dara Milner       |
| Stephanie Bartell | Debra Miretzky    |
| Renee Bearak      | Patrick Nelli     |
| Carla Berry       | Ivan Osinsky      |
| Joan Bradbury     | Christina Pagan   |
| Tracie Clisby     | Angie Pilgrim     |
| Lisa Davis        | Andrea Schuster   |
| Will Gunlicks     | Ricki Skaggs      |
| Laura Hammans     | Billy Slater      |
| David Hannsberry  | Ronnie Studnika   |
| Mike Kenefick     | David Vennettilli |
| Carol Kim         | Mike Vieth        |
| Sue Laue          | Whitney Wade      |
| Jennifer Maddrell | Laura Watson      |
| Tiffany Madison   | Jean Westrick     |
| Debbie Maggio     |                   |

# VOLUNTEER Corps

Kathy Acles  
 Diana Aixala  
 Shana Alford  
 Mark Anderson+  
 Jeanne Andersen Bakula  
 Carolyn Arnolds\*  
 Hntsa Asgedom  
 Maggie Aust  
 Annette Bacon  
 Jan Bail  
 Lorraine Barba  
 Becky Barbo  
 Sarah Barden  
 Brandon Barr  
 Stephanie Bartell  
 Tai Basurto  
 Jamie Bates  
 Renee Bearak  
 Marty Behn  
 Sonia Bell  
 Jared Beltowski  
 Jamie Bender  
 Rebecca Berger  
 Carla Berry  
 Judy Block+  
 Jennie Bodine  
 Sandra Bogaczyk  
 Anne Boor  
 Sarah Boulos  
 Shawn Bowen  
 Joan Bradbury  
 Julia Brown  
 Maryam Brown\*+  
 Michele Buttermore  
 Wiley Caldwell+  
 Mary Beth Canfield\*^+  
 Phil Canfield^  
 Jackie Canigiani^  
 Eric M. Carlson^  
 Ann Carr  
 Rich Carr  
 John Carroll^  
 Terry Carter^  
 Phyllis Chambers\*+  
 Tannaz Chapman^  
 Patrick Charles\*^+  
 Hollie Clay  
 Cara Clifford  
 Tracie Clisby\*  
 Jennifer Cofsky  
 Marilyn Cushing  
 Andrea Damenti  
 Lisa Davis  
 Tamara Davis^  
 Thomas Dee^  
 Niki Delemont  
 Sheena Desai  
 Megan Dorfman  
 Brian W. Duwe \*^+  
 Susan Elliott  
 Inna Elterman  
 Kristen Evans\*  
 John Ferguson  
 Marianne Flanagan  
 Suzanne Flavin  
 Jennifer Franklin  
 Julie Furigay^  
 Ashlee Gabrysch  
 Jenny Garcia  
 Nancy Garfien

Bob Gariano+  
 Carla Garner  
 Katherine Gean  
 Graham Gerst\*^+  
 Irene Goldfarb  
 Beth Grady  
 Reed Gregory  
 Will Gunlicks^  
 Ron Hale  
 Patricia Hagenah\*+  
 Mark Hallett  
 Laura Hammans  
 Stephanie Hammond  
 David Hannsberry  
 Judy Harmon\*  
 Kelly Hartman^  
 Melanie Hauck  
 Alex Hayes  
 Jayden Hicks  
 Polly Ho  
 Louanne Holland\*+  
 Mark Hoppe^  
 Bob Horne\*^+  
 Pamela Howard  
 Tonia Humphrey  
 Melissa Iserloth  
 Wendy Jackson  
 Shirley Jaffee\*+  
 Jeannie James\*+  
 Debby Jannotta\*+  
 Barbara Javaras  
 Bennett Johnson^  
 Jo Ellyn Johnson  
 Nadjela Johnson  
 Shelena Johnson  
 Carol Jones  
 Colleen Kamin  
 Rebekah Kane\*  
 Donna Kaufman^  
 Michael Kenefick  
 Katie Kennicott  
 Jane Kibler  
 Joanne Kiewicz  
 Carol Kim  
 Tim Knight  
 Matt Knoepke  
 Sara Larrazabal  
 Joe Lawler\*  
 Sue Laue\*  
 Christopher E. Lin^  
 Dabney Lyles  
 Christy Lynch  
 Katie Lyons^  
 Jennifer Maddrell  
 Tiffany Madison  
 Debbie Maggio  
 Michele Mandala  
 Mishawna Manning  
 Lynn Mathias  
 Tanginia May  
 Karen McCracken  
 Bernadine McCullough  
 JoAnne McDonald  
 Molly McEvoy  
 Jim McGill^  
 Corinne McGrail  
 Pat McMenamain  
 Linda McNelley  
 Liz Mendez  
 Hallie Metzger

Joan Miller  
 Karen Miller  
 Michal Miller\*  
 Dara Milner\*^  
 Debra Miretzky  
 Kristen Mitchell  
 Jan Molinaro  
 Heather Moore  
 Kristian Moore  
 Louellen Murray\*  
 Angelina Myers  
 Laurie Nasky  
 Marsha Nathan\*  
 Drew Navolio  
 Eloise Neidhardt\*  
 Patrick Nelli  
 Susan Nelson\*  
 Veeta Nowell  
 Anne O'Connor  
 Wande Olude  
 Ivan Osinsky  
 Lara Otsuka  
 Christina Pagan  
 Younghee Park  
 Kartik Patel  
 Georgy Ann Peluchowski  
 Angie Pilgrim\*^+  
 Greg Pilgrim^  
 Carrie Pilsbury^  
 Veronda Pitchford  
 Aileen Primack  
 Gretchen Quinn  
 Teresa Ramos  
 Parul Raval  
 Marcey Regan  
 Marjorie Ribeiro  
 Shellie Riedle Volkens  
 Cameron Robbins  
 Dana Robinson  
 Margie Rogasner\*  
 Diane Rohlin Thomas^  
 Chris Rohn^  
 Susan Rohrman\*  
 Laurie Rose  
 Daniella Royster  
 Shirley Ryan+  
 Mike Saladino  
 Nancy Saladino\*  
 Naz Saleem^  
 Jenice Sanders  
 Chris Santiago\*^+  
 Arline Sax  
 Aaron Schaecterle  
 Maureen Schaf  
 Marianne Schenker  
 Julie Begley Schmidt  
 Heather Schram  
 Marc Schulman^  
 Kathi Seiden-Thomas  
 Daila Shefner  
 Peggy Sheren  
 Shannon Quinn Sherrill  
 Jessica Siegel  
 Maxine Simmons  
 Sara Simon  
 Laura Simpson  
 Monica Sims\*^+  
 Rikki Skaggs  
 Billy Slater  
 Sarah Slavin^

Lynn Slawsky  
 Patti Smietana  
 Erica Smith  
 Margo Sorgman  
 Barb Spencer  
 Jean Spencer  
 Melissa Stenger^  
 Carrie Stone  
 Ann Streeper^  
 Veronica Studnicka  
 Ronnie Studnika  
 Gayle Sundt  
 Bill Teale  
 Orly Telisman  
 Jane Thain  
 Kelly Thigpen^  
 Diane Thomas  
 Brooke Tippet Thompson^  
 Mike Tirpak^  
 Ola Topczewska  
 Maren Tournell  
 Ann Turner^  
 John Turner^  
 Richard Turner^  
 Jamie Van Arkel  
 David Vennettilli  
 Mike Vieth  
 Whitney Wade  
 Joe Walsh  
 Valerie Warnsby  
 Alex Washington\*^+  
 Laura Watson\*^  
 Jason Waugh  
 Carol Wetmore  
 Rachel White  
 Laurie Whitmer  
 Beth Wilson^  
 Linnea Wilson  
 Nykeya Woods  
 JoJo Wynder  
 Shiela Yessenow  
 Nicole Zumpano\*^+

\* Volunteer Leaders  
 ^ FFT Selection Committee Members  
 + Board Members



**252**  
**Volunteers**

**More than**  
**75%**  
 are veteran  
 volunteers

# CONTRIBUTORS

July 1, 2011 through June 30, 2012

## CORPORATE & FOUNDATION

### Contributors

#### \$35,000+

Anonymous  
Fund for Teachers  
Lloyd A. Fry Foundation  
Polk Bros. Foundation

#### \$25,000+

Aon Foundation  
Oil-Dri Corporation  
of America  
Target

#### \$15,000+

Field Foundation of Illinois  
Malott Family Foundation  
People's Gas  
Skadden, Arps, Slate,  
Meagher & Flom  
Tawani Foundation

#### \$10,000+

Dr. Scholl Foundation  
Helen Brach Foundation  
Molex

#### \$5,000+

Anonymous  
GTCR  
Kenilworth Union Church  
William Blair & Company

#### \$100+

Chicago Board  
Options Exchange  
Pasquesi Sheppard LLC

## INDIVIDUAL & FAMILY FOUNDATION Contributors

#### \$25,000+

Joyce and Donald  
Rumsfeld Foundation  
Patrick G. and Shirley W.  
Ryan Foundation  
Sue and Steve Wilson

#### \$10,000+

Mary Beth and  
Phil Canfield  
Ann and Richard Carr  
AG Cox Charitable Trust  
Foley Family Foundation  
Tricia and Will Hagenah  
Hoban Family  
Charitable Foundation  
Mr. and Mrs. Richard M.  
Jaffee  
Mr. and Mrs. Edgar D.  
Jannotta, Sr.  
Lela Jeffries-Perteet

#### \$5,000+

Mr. Mark Anderson  
James and Catherine  
Denny Foundation  
Brian and Yasmina Duwe  
Chris Galvin  
Christy and Graham Gerst  
Virginia and Gary Gerst  
Juli and David Grainger  
Louanne and Bill Holland  
Kaplan Foundation Fund  
Holly and John Madigan  
Alexandra and John Nichols  
Arthur C. Nielsen, Jr. Trust  
Laurie and Scott Rose

#### \$2,500+

Vernon Armour  
CDM Foundation  
Phyllis and Bill Chambers  
Sonja and Conrad  
Fischer Foundation  
Bev and Warren Hayford  
The Charles  
Jacob Foundation  
Jeannie and Ed James  
Arthur C. Nielsen, Jr.  
Family Charitable Trust  
Diana and Bruce Rauner  
Mr. and Mrs. Harrison I.  
Stears  
Devanee and  
Alex Washington

#### \$1,000+

Anonymous (2)  
Mr. and Mrs. Robert H.  
Bacon  
Barbara Beré  
Judy and P.D. Block, III  
Mr. and Mrs. James R. Boris  
Mrs. Edward A. Brennan  
Mr. and Mrs. Wiley  
Caldwell Jr.  
Michelle L. Collins  
Douglas R. and S. Leigh  
P. Conant Cookie Jar  
Foundation  
Mr. and Mrs. E.  
David Coolidge, III  
Liz and Kent Dauten  
Betsy L. George  
Mr. and Mrs. James J.  
Glasser

Jennifer and Scott Gwilliam  
Pam and Jeff Hay  
Mr. and Mrs. Arthur J. Hill  
Kelly and Bob Horne  
The Jannotta-Pearsall  
Family Fund  
Mr. and Mrs. Silas Keehn  
The Anne Marie  
Kempczinski Foundation  
Susie and Dick Kiphart  
Mr. and Mrs. John S. Lillard  
Martha and John Mabie  
Kelly McGrail and  
Jeff Goulette  
Mr. and Mrs. Paul J. Miller  
Dara and Ross Milner  
Cathy and Bill Osborn  
Mr. and Mrs. John S. Palmer  
Sandra and Michael Perlow  
Marlene Welsh Phillips  
Angie and Greg Pilgrim  
Betsey and John Puth  
Carole Pyle-Weaver  
Mr. and Mrs. Collin E. Roche  
Patrick G. Ryan, Jr.  
Dr. Sheldon Schuster  
Carole and Gordon Segal

#### \$500+

Drs. Carla and Stephen Berry  
Carrie and Patrick Charles  
Karen and Tom Cofsky  
Kathryn and J.S. Cole  
Marge and Lew Collens  
Mr. and Mrs. Byram Dicks  
Mr. and Mrs. William  
Downey  
Mr. and Mrs. Daniel Edelman  
Mr. and Mrs. Marshall Field  
Suzanne Flavin  
Mr. and Mrs. Robert J.  
Gariano  
Mr. and Mrs. Larry Goodman  
Drs. Nancy and Stanley  
Handmaker  
Mrs. Margaret S. Hart  
Raynelle and Robert Heidrick  
Judith and Verne Istock  
Heidi and Dan Jaffee  
Mr. and Mrs. Joseph E.  
Jannotta, Jr.  
Mr. and Mrs. Michael Keiser  
Marvin Kocian  
Mr. and Mrs. Larry  
McCracken  
Jane and Bruce McLagan  
Michigan City  
Education Fund  
Mr. and Mrs. Newton N.  
Minow  
Clare Muñana  
Ms. Georgy Ann Peluchowski  
Mr. and Mrs. John M.  
Richman  
The Robbins Family  
Susan Rohrman  
Mr. and Mrs. Harry B.  
Rosenberg  
Mr. John Rutledge  
Kirsten and Chris Santiago  
Lorin and Aaron  
Schaechterle  
Marianne Schenker  
Kathleen and Jim Skinner  
Suzanne T. Smart  
Liz Stiffel  
Mr. and Mrs. Edmund Q.  
Sylvester

Carl and Marilynn Thoma  
Diane Rohlin Thomas  
Mr. and Mrs. Robert G.  
Weiss

#### \$250+

Anonymous  
Susan D. Bowey  
Anne L. Bryant  
Stanton R. Cook  
Dottie and Jim Currie  
Lynn Donaldson  
Mrs. Clarissa Y. Downey  
Patty Eylar and  
Charles Gardner  
Feitler Family Fund  
Mr. Wade Fetzner  
Sally and Jack Foster  
Mr. and Mrs. Dilip Ghate  
Ethel Gofen  
Gloria and Bill Gray  
Jean and John Greene  
Robert F. Hirsch  
Nancy Jaffee and  
William Patterson  
Mr. and Mrs. Ross H.  
Jannotta  
Mr. and Mrs. Walter  
Kasten, II  
Mr. and Mrs. Peter Keehn  
Connie and Dennis Keller  
Chris and Sheila Kennedy  
Patricia Kilduff  
Mr. Thomas Lillard  
Ann and John McDermott  
Joan and Andy McKenna  
Ruthie and Alan McNally  
Louise and Jack Mills  
Carolyn and David Nahrwold  
Marianne D. and Phillip R.  
Nielsen  
Mr. and Mrs. Douglass Petrie  
Mrs. John E. Robson  
Madeline and  
Michael Rosenberg  
Jean Sampson  
Mr. and Mrs. John Siragusa  
Dr. Barbara O. Taylor, Jr.  
Glen and Nancy Traylor  
Joan W. Ward  
Laura and Bob Watson

**\$100+**  
Anonymous  
Diana Aixala  
Dr. and Mrs. Carl Backer  
Maryam Brown  
Carney Family Foundation  
Ms. Mary Pat Carr  
Georganne Chalmers  
Smitha Chandran  
Mr. and Mrs. W.H. Clark  
Liz and Skip Coggin  
Constance and Thomas Cole  
Mrs. Edwin W. Darby  
Sara and Tom Donahoe  
Mr. and Mrs. Raymond  
Drexler  
Millicent Drower  
Kathryn and Al Duff  
Kristen Evans  
Anne and Dwight Fawcett  
Mr. and Mrs. John N. Fix  
Ray and Beth Grady  
Mrs. David Harvey  
Lee and Arthur Herbst  
Kathleen and Paul Hull  
Sheila and Robert Hulseman

Ms. Rosemary Isono  
Ed and Catherine King  
Dr. Alan B. and Dee H. Klein  
Blair and Bill Lawlor  
Mr. and Mrs. John G. Levi  
Mrs. Frank Little  
Jay McGreevy  
Diane M. McKeever  
and Eric Jensen  
Sheila and Harvey Medvin  
Dr. and Mrs. E. Dennis  
Murphy  
Eloise and Dick Neidhardt  
Jill and Fred O'Connor  
Anthony J. Orrico  
Mr. and Mrs. Donald S.  
Perkins  
The Perlman Family  
Foundation founded by  
Louis and Anita Perlman  
Katherine H. and Richard T.  
Peterson  
Arch Pounian  
Gretchen and Vincent Quinn  
Joan and Alan Ramsay  
Merrilee Clark Redmond  
Dede and Tom Reedy  
Marjorie S. Rogasner  
Gloria and Sheldon Rosing  
Kathy and Tom Rutherford  
John and Lois Sachs  
Mrs. Lloyd Schuster  
Barbara and Wally Scott  
Daila Shefner  
Paul E. Sheren  
Monica Sims  
Joyce and Roy Skoog  
Patricia Smetana  
Sara and Blake Swift  
Tria and Carson Thomas  
Mr. and Mrs.  
Charles Wasserman  
Mrs. Edward Anderson  
Wheeler  
Ms. Ann S. Wolff  
Joan and Bob Zabel  
Nicole M. Zumpano

#### Up to \$100

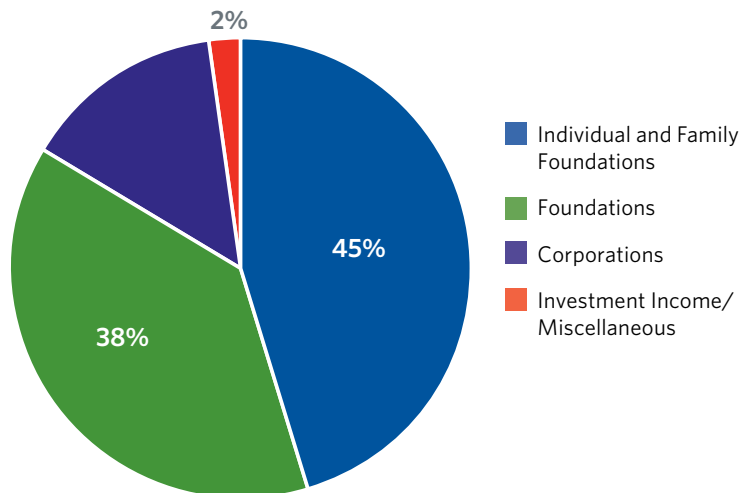
Anonymous  
Ms. Stephanie Ascherl  
Mr. Hntsa Asgedom  
Lindi Butler-Walton  
Michele Buttermore  
Marilyn Cushing  
Shoushig and Richard  
Dagdigian  
Rachel Dose  
Claire Douglass  
Eileen and Joseph Fitzpatrick  
Urik Halliday  
Judy and George Harmon  
Elizabeth P. Hoban  
Barbara Kariotis Javaras  
Raymond Kinzie  
Janet and Don Levy  
Mary and Mel Marks  
Mrs. Corinne McGrail  
Sheila K. Mitchell  
Anna Kanellos Moreno  
Marsha Nathan  
Dr. Ann O'Connell  
Carol and Fred Rakowsky  
Carrie and Doug Stone  
Ms. Sondra M. Varco  
Mary M. Walther

# FINANCIAL Highlights

Based on unaudited financial reports for the fiscal year ending June 30, 2012.

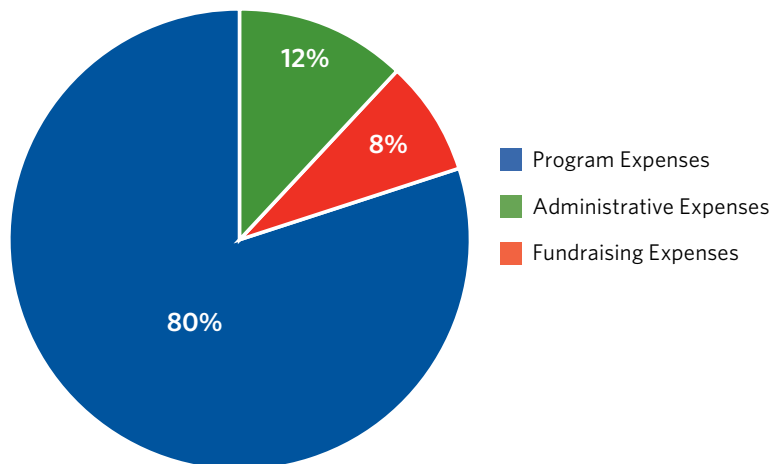
## INCOME

|                                   |                  |
|-----------------------------------|------------------|
| Individual and Family Foundations | \$376,856        |
| Foundations                       | \$317,360        |
| Corporations                      | \$119,100        |
| Investment Income / Miscellaneous | \$18,067         |
| <b>Total Income</b>               | <b>\$831,383</b> |



## EXPENSES

|   |                  |
|---|------------------|
| <b>Program Expenses</b>                     | <b>\$643,748</b> |
| <i>Small Grants</i>                         | \$209,048        |
| <i>Fund for Teachers</i>                    | \$195,009        |
| <i>Study Groups</i>                         | \$177,604        |
| <i>Action Research Leadership Institute</i> | \$62,087         |
| <b>Administrative Expenses</b>              | <b>\$98,475</b>  |
| <b>Fundraising Expenses</b>                 | <b>\$63,363</b>  |
| <b>Total Expenses</b>                       | <b>\$805,586</b> |
| Net Income                                  | \$25,797         |



## IN-KIND Contributors

5-Hour Energy | Adler Planetarium | Adventure Stage Chicago | Aidan & Associates, Certified Public Accountants | Aileen Park | Alma Izquierdo | Aria at the Fairmont Hotel | Boundless Readers | Broadway in Chicago | California Pizza Kitchen | Catalyst Chicago | Catherine Rowbotham | Changing Worlds | Chicago Area Reading Association | Chicago Area Writing Project | Chicago Bears | Chicago Children's Museum | Chicago Cubs | Chicago History Museum | Chicago Humanities Festival | Chicago New Teacher Center | Chicago Shakespeare Theater | Chicago Symphony Orchestra | Chicago White Sox | Chicago Wolves | Consortium to Lower Obesity in Chicago Children | Constitutional Rights Foundation | D4 Irish Pub & Café | Dermatology Associates of Wicker Park | Dick Blick Art Materials | Dolores Kohl Education Foundation | East Bank Club | Eli's Cheesecake | Embassy Suites - Chicago Downtown/Lakefront | Esmé Raji Codell | Etsy's Grandma Sally | Forest Preserve District of Cook County | Francesca's Restaurants | Frank Lloyd Wright Preservation Trust | Garfield Park Conservatory Alliance | Grand Luxe Café | GTCR | Heaven on Seven | High Jump Chicago | I-GO Car Sharing | Illinois Autism Training & Technical Assistance Project (IATTAP) | Illinois Department of Natural Resources | Jason Waugh | Joffrey Ballet Company | Katie and Red Kennicott | Kerasotes Showplace ICON | Lakeshore Learning Materials | Lakeview Athletic Club | Lawry's Restaurants, Inc. | Lee & Eddie's Catering | Lincoln Park Zoo | Lookingglass Theatre Company | Marbles the Brain Store | Market House Restaurant at the Doubletree Hotel | Massage Envy | Massa & Company Information Architects | Museum of Science and Industry | National Hellenic Museum | Neiman Marcus | NEIU's Teachers' Center | NMMPG Dermatology | Oil-Dri Corporation of America | Open Books | Oppenheimer Family Foundation | Paper Source | Peggy Notebaert Nature Museum | Pritzker Military Library | Project Exploration | Project Play | Saraphine | Schuster Family | Shedd Aquarium | Sheraton Chicago Hotel | Skadden, Arps, Meagher & Flom | Smarty Pants are Leaders | Starbucks | Steppenwolf | Storybuilders | Swissotel | Target | Teach Plus | Teachers for Social Justice | Trader Joe's | TRU | Tim Knight Photography | UIC Center for Economic Education | Vaughan's Hospitality Group | Wear at Work | Wind Point Partners | Wrigley Company Foundation | Writers' Theatre | Wyndham Hotel | YCAMP

## EXECUTIVE COMMITTEE

Mary Beth Canfield  
*Chairperson*

Alex Washington, *Wind Point Partners*  
*Vice Chairperson*

Chris Santiago, *NASDAQ*  
*Treasurer*

Maryam Brown, *Integrus Energy Services*  
*Secretary*

Shirley H. Jaffee  
*Vice President, Development*

Deborah R. Jannotta  
*Vice President, Development*

Phyllis Chambers

C. Graham Gerst  
*Global IP Law Group, LLC*

Patricia S. Hagenah

Robert D. Horne, *Dodge Capital, LLC*

Jeannine W. James

## DIRECTORS

Mark Anderson, *GTCR*

Judith S. Block

Wiley N. Caldwell

Patrick Charles, *Zurich North America*

Brian Duwe, *Skadden, Arps, Slate, Meagher & Flom, LLP*

Robert J. Gariano, *Robert Gariano & Associates*

Louanne Holland

Angela Pilgrim

Shirley Ryan, *Pathways Center for Children*

Monica Sims, *Pershing West Middle School*

Nicole Zumpano, *May Community Academy*

## LIFE TRUSTEES

Joyce Rumsfeld  
*Founder*

John B. Foster

Mary Galvin

Edgar D. Jannotta, *William Blair and Company*

Frederick A. Krehbiel, *Molex, Inc.*

Josephine B. Minow

Newton N. Minow, *Sidley Austin, LLP*

Harrison I. Steans, *Financial Investments Corporation*

Stephen R. Wilson, *CF Industries*



### WE'VE MOVED!

One N. LaSalle Street  
Suite 1675  
Chicago, IL 60602  
p: 312.670.2323  
f: 312.670.2029